



# AnyWin Server Quick Start

Following are the requirements and steps for installing and configuring the AnyWin Server.

**For more instructions, see user guide.**

## OS Requirements

- WindowsXP
- Windows Vista
- Windows 7
- Windows 8/8.1
- Windows 10
- Windows Server 2003
- Windows Server 2008/2008R2
- Windows Server 2012/2012R2
- Windows Server 2016

- ❖ AnyWin listens on port 6601 and 80 for web by default for TCP packets. You can change it in preference > options ( see user guide)

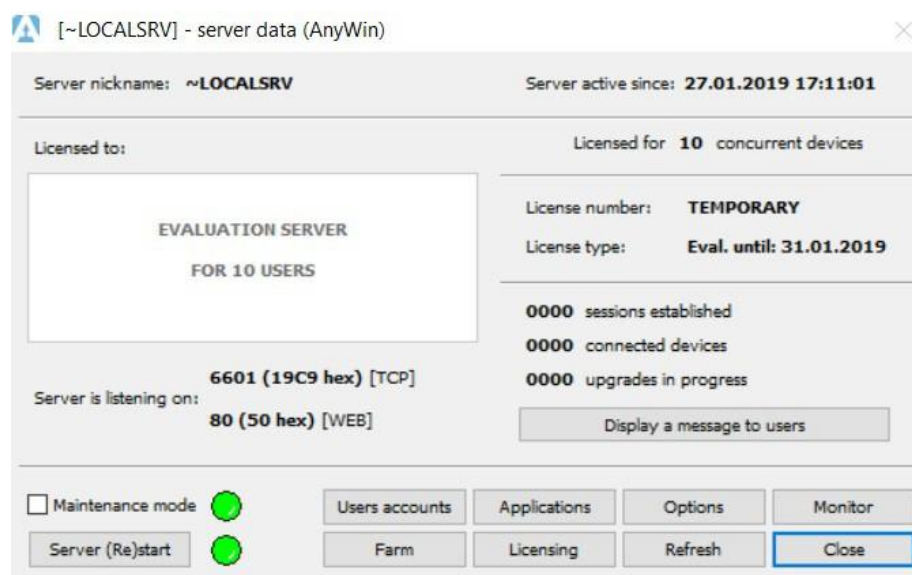
## AnyWin Client

AnyWin Client is available for Windows, Android, and web browser. For a complete list of supported platforms and browsers, please see the user guide

1. Open AnyWin Server setup and start installation. "Full installation"



2. After installation reboot your machine and open AnyWin Server.
3. Open preference and go to user accounts. Add user account and set password.



[~LOCALSRV] - users accounts

Server nickname: ~LOCALSRV Authentication via: AnyWin

User groups list: Add group, Add/remove users, Drop group, Applications

User profiles list: Add account, Edit account, Drop account, Unlock, Applications

Export accounts to file Import accounts from file

Reusing password prohibited within 180 days

Enforce "strong" user passwords

Lock account after 3 invalid logins

Grant access to all applications to newly created users

Launch applications as Windows user

Domain: Username: Password:

Refresh data Save Close

4. Go to applications and add this one which you want to publish in AnyWin environment.

[~LOCALSRV] - server data (AnyWin)

Server nickname: ~LOCALSRV Server active since: 27.01.2019 17:11:01

Licensed to: EVALUATION SERVER FOR 10 USERS

Licensed for 10 concurrent devices

License number: TEMPORARY

License type: Eval. until: 31.01.2019

0000 sessions established

0000 connected devices

0000 upgrades in progress

Server is listening on: 6601 (19C9 hex) [TCP], 80 (50 hex) [WEB]

Display a message to users

Maintenance mode  Server (Re)start

Users accounts Applications Options Monitor Farm Licensing Refresh Close

[~LOCALSRV] - allowed applications

Allowed applications list:

ID	Application name	Full application path	Application working directory
----	------------------	-----------------------	-------------------------------

Delete selected application Edit selected application + Add new application

Create application shortcuts on the client desktop during the first login

Create application shortcuts in the client's menu Start during the first login

Offer the user a password update in the client desktop application shortcuts when the password is changed on the server

Ignore allowed applications list (only for CA-Clipper/(x)Harbour)

Cancel Save and close

5. Now go to licensing and type activation code. If you don't have it, contact AnyWin support to get trial 30 day license or buy permanent license in AnyWin online shop.

**For more information visit [any-win.com](http://any-win.com) or email us [support@any-win.com](mailto:support@any-win.com)**